

YOU MATTER TO ME

Words and Music by
SARA BAREILLES

Gently

Chord diagrams: Bsus, C#m7, E5/A

mp

Chord diagrams: Bsus, C#m7, E5/A

Chord diagrams: Bsus, C#m7, E5/A

Guy: I could find the whole mean-ing of life in those sad _____ eyes.

Chord diagrams: Bsus, C#m7, E5/A

They've seen things that you nev - er quite say, but I _____ hear. _

Chords: Bsus, C#m7, E5/A

Come out of hid - ing, I'm right here be - side _____ you, _____ and I'll

Chords: Bsus, C#m7, E5/A

stay there _____ as long as you'll _____ let me. _____ Be - cause

Chords: E, F#m, G#m, Amaj9

you mat - ter _____ to me. _____

Chords: C#m7, Bsus, E5/A

Sim - ple and plain and not much to ask from some - bod - y.








You mat - ter _____ to me, _____ I prom-ise you







do, you, you mat - ter too. _____ I prom-ise you





do, you'll _____ see.





You mat - ter _____ to me. _____

Girl: It's ad-dict-ive the min-ute you let your-self





think, "The things that I — say just might mat - ter to





some-one." All of this time I've been keep-ing my mind on the





run-ning a - way, and for the first time, _ I think I'd — con -






sid-er the stay. Be-cause you mat - ter —

Emaj9 G#m7 B/F#

to me. Sim - ple and plain, and not much to ask from

B/E B D#m B5/E

some-bod - y. You mat - ter

F#sus G#m9 E(add9) B

to me. I prom-ise you do, you, you mat - ter, too.

F# G#m E(add9) B

I prom-ise you do, you'll see.

Sheet music for guitar and piano, featuring guitar chords and lyrics.

Chords:

- C#m7
- B5/E
- B
- C#m7
- F#7sus
- Emaj7
- B
- C#m7

Lyrics:

You mat - ter _____

_____ to me. _____

F#7sus

Emaj7

Both: And

*Guy sings harmony in small noteheads.

B

C#m

D#m

Emaj9

you mat - ter to me.

G#m7

B/F#

B/E

Sim - ple and plain, and not much to ask from some - bod - y.

B

D#m

B5/E

F#7

You mat - ter to me.

G#m9



E(add9)



B



F#(add2)



Guy: Out of hid-ing, I'm right here be-side you, _____ as

— Girl: I prom-ise you do, you, you mat-ter too. _____

G#m7



E(add9)



B



F#(add2)



long as you'll have me.

Out of hid-ing, I'm right here be-side you. _____

— I prom-ise you do, you, you mat-ter too. _____

G#m7



E(add9)



B



F#(add2)



I

do

prom-ise you do, _____ you

— I prom-ise you do, you, you mat-ter too. _____

G#m7

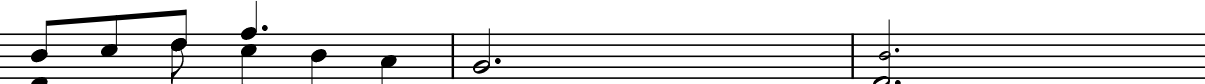


mat - ter to me.

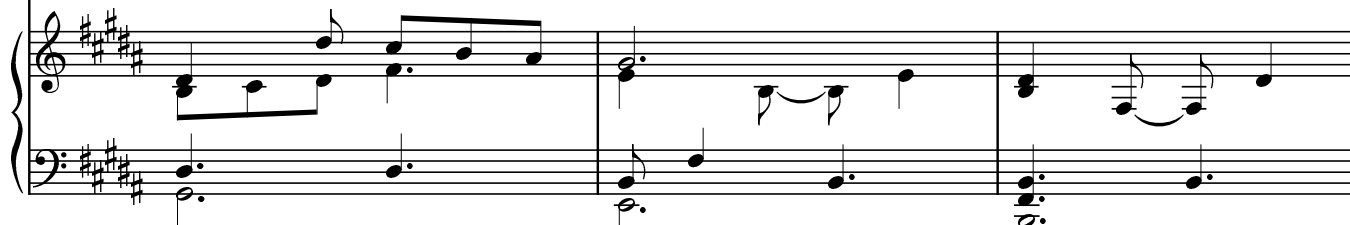
E(add9)



B



I prom - ise you do.

Both: You'll

C#m7



see,

you

B/E



C#m7



mat - ter to me.



B/E



F#sus



B

