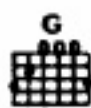
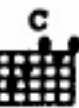


So Lonely.

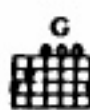
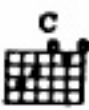
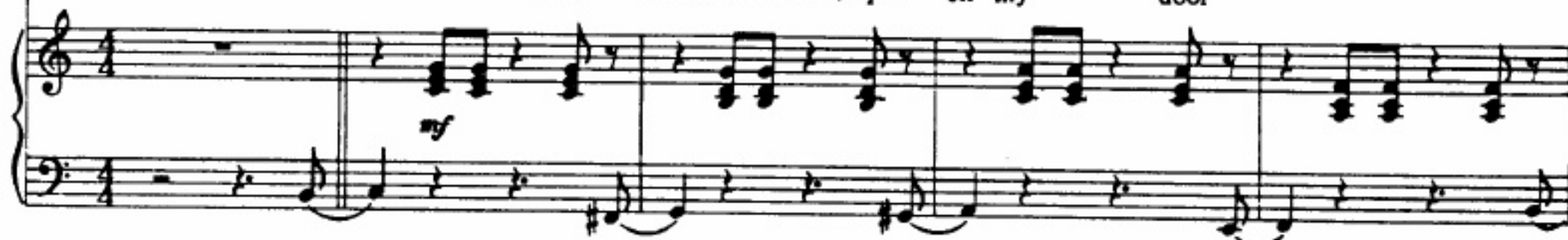
Words & Music: Sting

Reggae feel

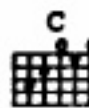
$\frac{3}{8}$



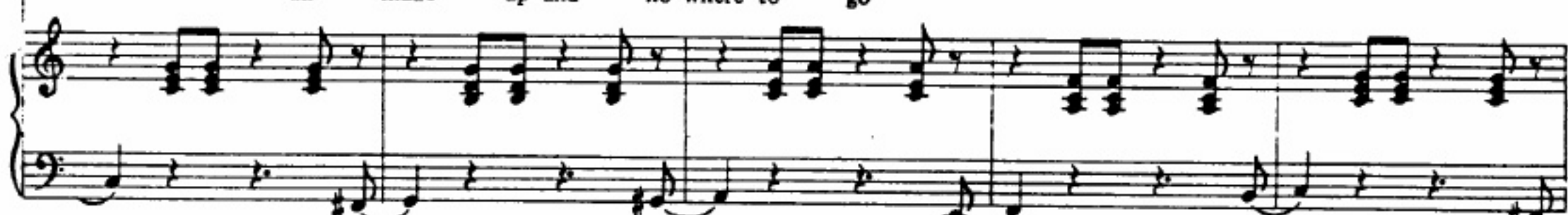
Well some-one told me yes - ter - - day
Now no-one's knocked up - on my door



that when you throw your love years a - - way
for a thou - sand years or - - more



You act as if you just don't care you
all made up and no-where to go



look as if - - you're - - go - ing some - where - -
wel - come to - - this - - one man - - show - -

But
Just



G Am F C G

I just can't con - vince my self free I could - n't live with
 take a seat they're al - ways free no sur - prise no

Am F C G

no - one else. And I can on - ly
 mys - ter - y. In this theat - re that I

Am F C G

play that part And sit and nurse my
 call my soul I al - ways play the

Am F C G

bro - ken heart So lone - ly, So lone - ly, so lone - ly
 star - ring role

cresc. *ff*

Am F C G

so lone - ly so lone - ly so lone - ly

1.3 C

Am F G Am To Coda

so lone - ly _____ so lone - ly _____

⊕ CODA

F *D.S. (with repeat of Chorus) al Coda* D A

ad lib. guitar solo

Bm G D

A Bm G D

So lone - ly _____

D A Bm G

so lone - ly _____ so lone - ly _____ so lone - ly _____

ad lib. vocals to Fa