

Recorded by BILL WITHERS  
and Featured in the Twentieth Century Fox Television Series GLEE

# Lean on Me

For SATB, Solos and Piano

Duration: ca. 3:00

Original GLEE arrangement by  
ADAM ANDERS and TIM DAVIS  
Adapted for publication by ROGER EMERSON

Words and Music by  
BILL WITHERS

Gospel rock ♩ = 88

Soprano *mp*

Alto

Hum, hum, hum, hum, — hum, hum, hum, hum, —

Tenor *mp*

Bass

A Bm C#m D G/D D C#m Bm A

*mp*

3 Voice 2 (Male)

*mp*

Yeah, —

Soprano *no breath*

Alto — hum, hum, hum, hum, — hum. — Hum, hum, hum, hum, —

Tenor *no breath*

Bass

D/A Bm C#m C#m/E E A Bm C#m D

2  
6 Voice 1 (Female)

*mp*  
Oh, — yeah. —

Voice 2

hm. — Oh, — no. —

Soprano

Alto

hum, hum, hum, hum, — hum, hum, hum, hum, — hum. —

Tenor

Bass

—

C#m Bm A

E

A

9 Voice 2

Some - times in our lives — we all have - pain, — we all have sor -

A

Bm C#m D

C#m Bm A

Bm C#m A/E

12

- row. But, if we are wise, — we know that there's — al-ways to-mor-

E

A

BmC#mD

C#m Bm A

E

16 Voice 1

*mf*

Lean on me when you're not strong, and I'll be your friend,

Voice 2

*mf*

row. Lean on me when you're not strong, and I'll be your friend,

Soprano

*mf*

Lean on me when you're not strong, and I'll be your friend,

Alto

*mf*

Lean on me when you're not strong, and I'll be your friend,

Tenor

*mf*

Lean on me when you're not strong, and I'll be your friend,

Bass

*mf*

A D A

19

I'll help you carry on; for it won't be long -

I'll help you carry on; for it won't be long -

I'll help you carry on; for it won't be long -

*Unis.*

I'll help you carry on; for it won't be long -

A/E E D/E A D



'til I'm gon - na need some - bod - y to lean on.



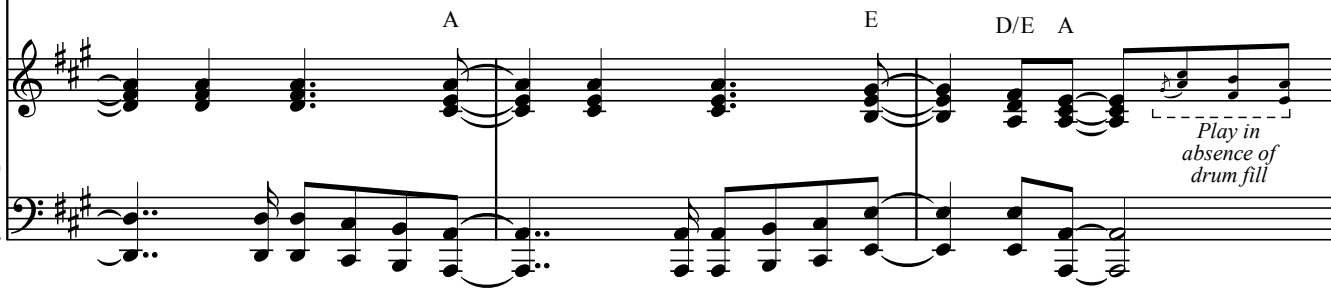
'til I'm gon - na need some - bod - y to lean on.



'til I'm gon - na need some - bod - y to lean on.



'til I'm gon - na need some - bod - y to lean on.



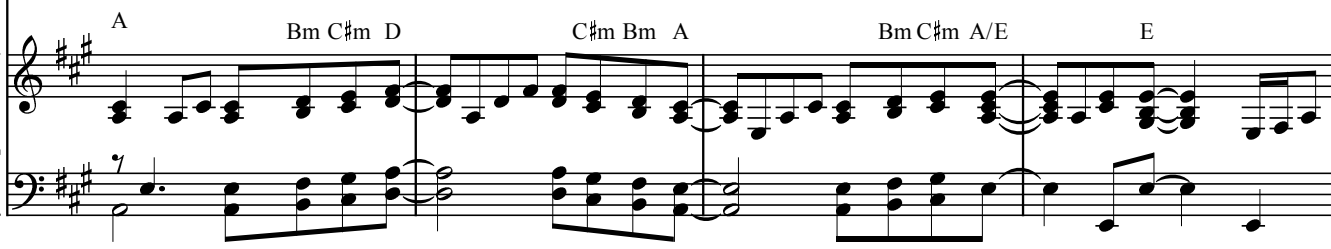
Play in absence of drum fill



Please swal-low your pride if I have things you need to bor - row;



Please! Pride! You need to bor - row;



29

for \_\_\_ no one can fill \_\_\_ those of your needs \_\_\_ that you won't

for, oo, oo.

*Unis.*

A Bm C#m D C#m Bm A E

32 Voice 1

let \_\_\_ show. \_

*f* When you need a hand, \_ we all \_\_\_

Voice 2

*f*

Small Group

*f* *Alto/Tenor unison*

When you need a hand, \_

Just lean on me! Hey! \_ You need a hand! \_

Soprano

*Unis.*

Alto

Call on me broth - er when you need a hand, \_

Tenor

*Unis.*

Bass

A N.C.

*f*

need some-bod - y to lean \_\_\_\_\_ on. \_\_\_\_\_

some - bod-y \_\_\_\_\_ to lean \_\_\_\_\_ on.

SAT or SSA  
Just might have a prob-lem!

need some-bod - y to lean \_\_\_\_\_ on. \_\_\_\_\_ Might have a prob - lem that

Unis. Unis.

We all \_\_\_\_\_ need some-bod - y to lean \_\_\_\_\_ on. \_\_\_\_\_

Opt 8vb. Oh, \_\_\_\_\_

Lean on \_ me! \_

you'll un-der - stand. \_ We all \_\_\_\_\_ need some - bod - y to lean \_\_\_\_\_ on. \_\_\_\_\_

F#m E D A/C# D E D/E A

41

if there is a load — you have to bear — that you can't car -

*mf* *mf* *mf* *rejoin ensemble*

You have to bear. —

If there's a load, — car -

*mf* *Unis.*

A Bm C#m D C#m Bm A Bm C#m A/E

44 Voice 1

*mf*

I'll share your load, —

ry, — I'm — right up the road. — *loco* I'll share your load, —

ry, — right up the road. — Oo. —

E A Bm C#m D C#m Bm A

*cresc. poco a poco*

if you'll just call me. Call me.

*cresc. poco a poco*

*Opt. 8vb*

if you'll just call me. I'm call - in!

*Unis.* *Unis.* *cresc. poco a poco*

If you'll just call me. Call me.

*Unis.* *cresc. poco a poco*

E A Bm/A A

If you'll just call me. Call me.

When you need a friend. Call me. Call

Call me when you need a friend.

Call me. Call me. Call me.

Bm/A A Bm/A A Bm/A A

Call me. Call me. Call me.



53

me. \_ When you need a friend. If you need a friend. \_ An-y time of day. \_

Call on me. \_

Call me. \_ Call me. \_ Call me. \_

Freely

56

*rit.* *sub. mp* *3* *accel. e cresc.*

Yeah, oo \_ it won't be long - til I'm gon-na need - some-bod-y to lean

*ff* *rit.*  
*loco*  
Call me!

*accel.*

*ff* *rit.*  
Call me!

*accel.*

*accel.*

60 Voice 1

*ff*  
*a tempo*

*improvise in a gospel style to end*

on, lean on, lean on \_\_\_\_\_ me. \_\_\_\_\_ Lean, lean \_\_\_\_\_ on me, \_\_\_\_\_

Voice 2

*a tempo*

Small Group

*ff*  
*a tempo*

Lean on, lean on me!

When you need a friend!

Soprano

*a tempo*

*ff*

Alto

Yeah!

Lean on

me!

Tenor

*a tempo*

*ff*

Bass

E

A7

D9

*ff* *a tempo*

— yeah.

Hey, \_\_\_\_\_

yeah, \_\_\_\_\_

lean - on

me. -

Lean on, lean on me!

When you need a friend Lean on, lean on me!

Lean on!

Lean on me!

Lean on!

A7 D9 A7

66

I'm gon-na need — some-bod - y to lean — on. —

I'm gon-na need, — I'm gon-na need. —

Lean on me! Some-bod - y to lean — on. —

D9 A E F#m A/E

69

Hey, — some-bod-y to lean on, — yeah! —

Hey, — yeah, — woh! —

Some-bod - y to lean — on! Yeah!

*improvise in a gospel style*

*rejoin ensemble*

E D A