

# MacARTHUR PARK

Words and Music by  
JIMMY WEBB

Moderately

Dm Dm/C Eb/Bb

*mp* *legato*

Cm Gm Bb/F

A<sup>b</sup> B<sup>b</sup>/E<sup>b</sup> Gm A<sup>b</sup>/E<sup>b</sup> D<sup>b</sup>/E<sup>b</sup> E<sup>b</sup>/F Dm

(♩ = ♩) (♩ = ♩)

Spring was nev-er wait - ing \_\_\_\_\_ for us,  
I re-call the yel - low cot-ton

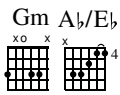
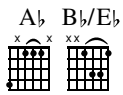
*mf*

Dm/C Eb/Bb

girl, it ran\_ one\_\_ step a - head as we fol - lowed in\_\_ the  
dress foam - ing like a wave on the ground a - round your



dance.  
knees.



Be - tween the part-ed pag - es \_\_\_ and were  
The birds like ten-der ba - bies \_\_\_ in your



pressed hands in love's \_\_\_ hot fe-vered i - ron \_\_\_ like a strip - ed pair \_\_\_ of  
and the old man play-ing cheq - quers by the



pants. }  
trees. }



Mac - Ar - thur's Park is melt - ing in the dark, \_

*mf*



all the sweet green ic - ing flow - ing down. \_



Some-one left the cake \_ out \_ in the rain; \_ I don't \_



think that I \_ can take it 'cause it took so long to bake \_ it and I'll

4 C/E Fmaj7 Eb

nev-er have \_ that rec-i - pe \_ a - gain, oh, no. \_\_\_\_\_

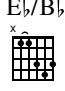

1. Cm Db Abmaj7 Cm/F Db 2. C


Ab Ebmaj9 Dm7 Cmaj7 Am7 Fmaj9 Bm7 Fmaj7 Bbmaj7 Eb

Ab Abmaj7 Ab7 Db


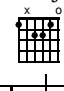
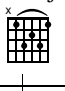
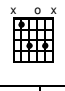
*molto legato* *rit.*


Red. \* Red. \* Red. \* Red. \*

E $\flat$ /B $\flat$   F 

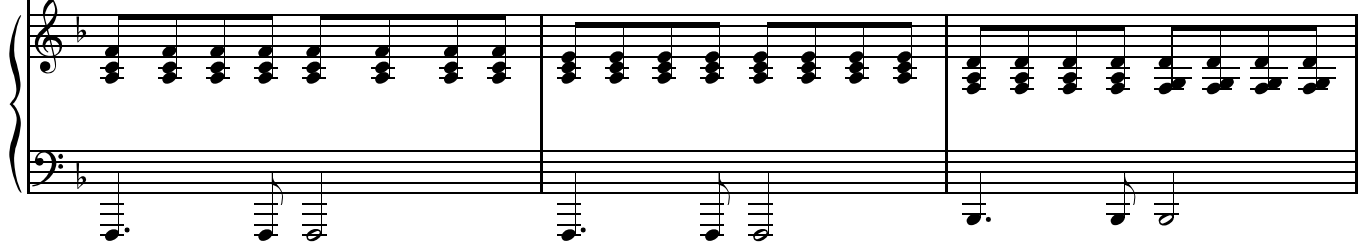


*a tempo*

F  \*  Fmaj7  B $\flat$ maj7  B $\flat$ 6



There will be an - oth - er song \_ for me for I will sing \_\_\_\_\_ it, \_\_\_

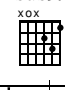

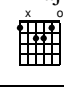


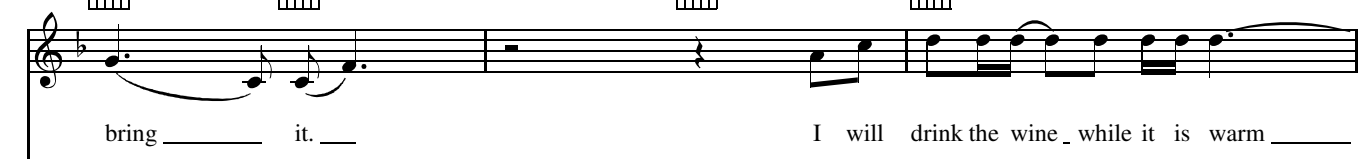
B $\flat$ dim7 




there will be an - oth - er dream for me, some - one will



Fsus9/A  F  Fmaj7  B $\flat$ maj7



bring \_\_\_\_\_ it. I will drink the wine \_ while it is warm \_\_\_\_\_

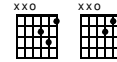


Em7 $\flat$ 5

Am7



D7sus4 D7



C



D7



and nev-er let you catch look-ing at the sun, and

Gm7



Gm7/C

C7 $\flat$ 9

Fmaj7



F



af-ter all the loves of my life, af-ter all the loves of my

B $\flat$ maj7E $\flat$ maj7

Gm7/C



C7



life you'll still be the one. I will

F



Fmaj7

B $\flat$ maj7B $\flat$ 6

take my life in-to my hands and I will use it,

Bbdim7



Fsus9/A



F



I will win the wor - ship \_ in their eyes \_\_\_\_\_ and I \_\_ will lose \_\_\_\_\_ it. \_

Bbmaj7



Em7b5



I will have the things \_ that I de - sire \_\_\_\_\_ and my pas - sion flow like

Am7



D7sus4



D7



C



D7



Gm7



riv - ers to the sky, \_\_\_\_\_ and af - ter all the loves \_ of my

Gm7/C



C7b9



Fmaj7



Bbmaj7



life, oh, af - ter all the loves \_ of my life I'll be think - ing of

E $\flat$ maj7



Csus4



Dm



you

and won-der - ing

why.

Dm/C



E $\flat$ /B $\flat$



Gm



B $\flat$ /F



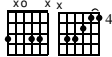
A $\flat$



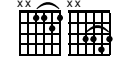
B $\flat$ /E $\flat$



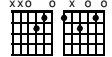
Gm A $\flat$ /E $\flat$



D $\flat$ /E $\flat$ E $\flat$ /F



Am/DC/F



Double tempo (♩ = ♩)

Gm



Am/G



Gm7



C/D



Gm



Am/G



Gm7



C/D



*f*



Gm Am/G Gm7 C/D Gm Am/G Gm7 Am7

Musical notation for the first system, featuring guitar chord diagrams for Gm, Am/G, Gm7, C/D, Gm, Am/G, Gm7, and Am7. The notation includes a treble clef with a key signature of one flat and a bass clef with a key signature of one flat. The music consists of chords and a bass line with eighth notes.

Dm7 G/D Dm7 G/D Dm7 G/D Dm7 G/D

Musical notation for the second system, featuring guitar chord diagrams for Dm7 and G/D. The notation includes a treble clef with a key signature of one flat and a bass clef with a key signature of one flat. The music consists of chords and a bass line with eighth notes.

E♭maj9 Am7 E♭maj9

Musical notation for the third system, featuring guitar chord diagrams for E♭maj9 and Am7. The notation includes a treble clef with a key signature of one flat and a bass clef with a key signature of one flat. The music consists of chords and a bass line with eighth notes.

B♭maj7 Am7 E♭maj9 F

Musical notation for the fourth system, featuring guitar chord diagrams for B♭maj7, Am7, E♭maj9, and F. The notation includes a treble clef with a key signature of one flat and a bass clef with a key signature of one flat. The music consists of chords and a bass line with eighth notes.

G A/G Gm7 C/D G A/G Gm7 Am7

E $\flat$ /B $\flat$  B $\flat$  E $\flat$ sus4/B $\flat$  E $\flat$ /B $\flat$  G/B G7/B G7 $\flat$ 9/B $\flat$  G7

Cm B+ E $\flat$ /B $\flat$  Am7 $\flat$ 5 Fm E+ A $\flat$ /E $\flat$  Dm7 $\flat$ 5

1. | 2.

E $\flat$ m7 E $\flat$ m7/A $\flat$

**Tempo I**

N.C.

Mac -

*cresc.*

F Fmaj7

Ar - thur's Park is melt - ing In the dark, all the sweet green ic - ing

*f*

Cm7 Cm7/F F7b9 Bb

flow - ing down. \_\_\_\_\_ Some - one left the cake\_ out in the

B♭maj7



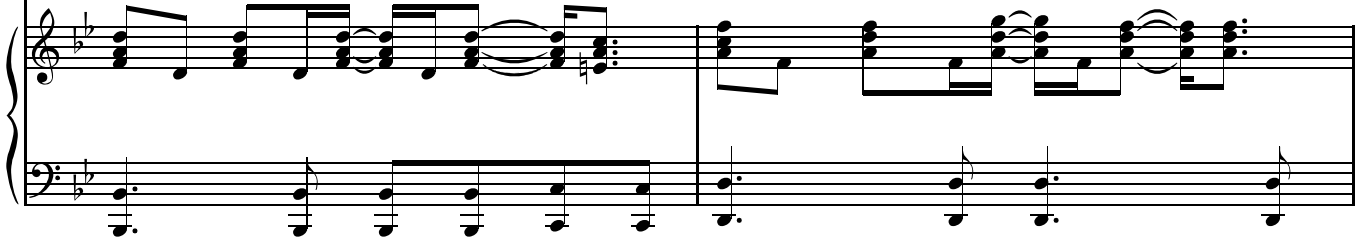
C6



Dm



rain; I don't think that I can take it 'cause it



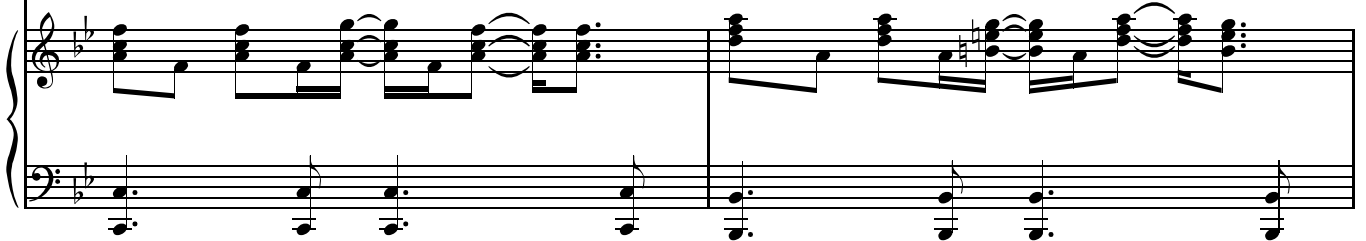
F/C



Bm7♭5



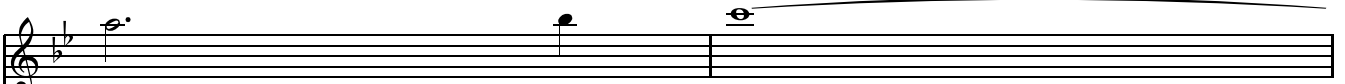
took so long to bake it and I'll nev-er have that rec-i-pe a-



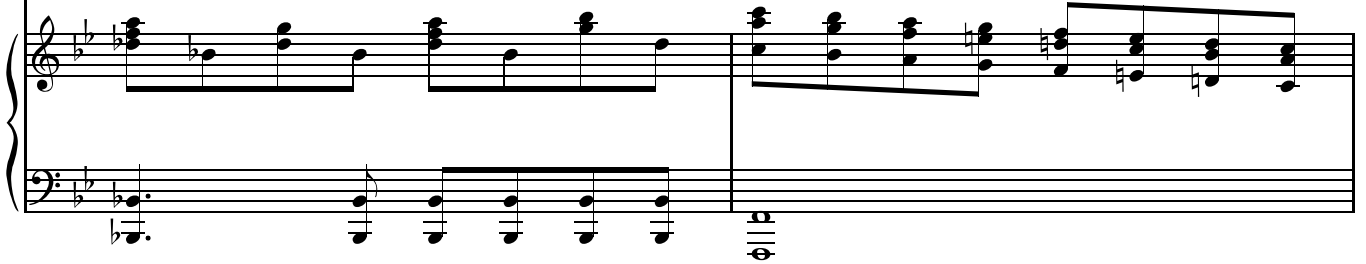
B♭m



F



gain, oh, no.



Fm



Gb



Oh, \_\_\_\_\_ no, \_\_\_\_\_

B $\flat$ sus4



B $\flat$



B $\flat$ sus4



Fsus4



B $\flat$



No, no, no, oh, no.

*cresc.* *rit.* *ff*