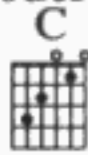


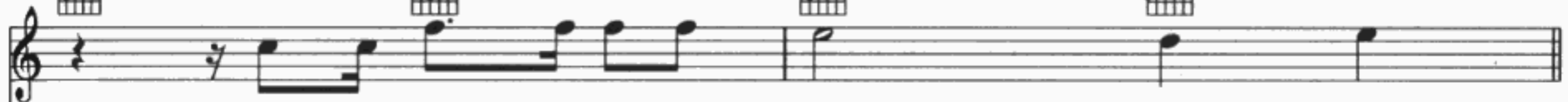
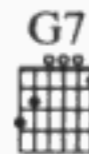
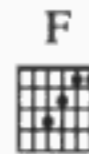
MELLOW MOOD

Words and Music by Bob Marley

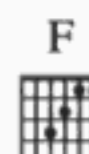
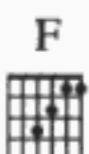
Strum Pattern 3
Moderate Reggae



I'll play your fav'r - ite song, dar - lin'.



We can rock it all night long, dar - lin'.



'Cause I've got love, dar - lin', love, sweet

C G7 C F

love, dar - lin'. Mel - low mood has the
Qui - et as the

Detailed description: This system contains the first four measures of music. The vocal line starts with 'love, dar - lin' on measures 1 and 2, followed by 'Mel - low mood has the' on measure 3 and 'Qui - et as the' on measure 4. The piano accompaniment features a steady bass line and chords in the right hand.

C G7 C F

got night, me, so let the mu - sic
please turn off your

Detailed description: This system contains measures 5 through 8. The vocal line continues with 'got night, me,' on measures 5 and 6, 'so please' on measure 7, and 'let the mu - sic turn off your' on measure 8. The piano accompaniment continues with the same harmonic structure.

C G7 C F

rock light. me. I'll play your fav'r - ite

Detailed description: This system contains measures 9 through 12. The vocal line has 'rock light. me.' on measures 9 and 10, and 'I'll play your fav'r - ite' on measures 11 and 12. A double bar line is present at the end of measure 10. The piano accompaniment includes a repeat sign at the end of measure 10.

C G7 C F

song, dar - lin'. We can rock it all night

Detailed description: This system contains measures 13 through 16. The vocal line starts with 'song, dar - lin'' on measures 13 and 14, and 'We can rock it all night' on measures 15 and 16. The piano accompaniment concludes the piece with a final chord in measure 16.

C G7 C F

long, dar - lin'. Strike the ham - mer while

Detailed description: This system contains the first two lines of music. The top line is the vocal melody with guitar chords C, G7, C, and F indicated above it. The lyrics are "long, dar - lin'." and "Strike the ham - mer while". The middle line is the piano accompaniment in the right hand, and the bottom line is the piano accompaniment in the left hand. The music is in 4/4 time and features a key signature of one flat (Bb).

C G

Play 3 times

i - ron is hot. O - pen up your heart...

Detailed description: This system contains the third and fourth lines of music. The top line is the vocal melody with guitar chords C and G indicated above it. The lyrics are "i - ron is hot." and "O - pen up your heart...". The middle line is the piano accompaniment in the right hand, and the bottom line is the piano accompaniment in the left hand. A triplet of eighth notes is marked with a '3' and a slur. A repeat sign with a first ending bracket is present. The music is in 4/4 time and features a key signature of one flat (Bb).

F

O - pen up your heart... Let love come run - ning

Detailed description: This system contains the fifth and sixth lines of music. The top line is the vocal melody with a guitar chord F indicated above it. The lyrics are "O - pen up your heart..." and "Let love come run - ning". The middle line is the piano accompaniment in the right hand, and the bottom line is the piano accompaniment in the left hand. The music is in 4/4 time and features a key signature of one flat (Bb).

C G7 C F C G7

in, dar - lin', love sweet love, dar - lin',

Detailed description: This system contains the seventh and eighth lines of music. The top line is the vocal melody with guitar chords C, G7, C, F, C, and G7 indicated above it. The lyrics are "in, dar - lin'," and "love sweet love, dar - lin'". The middle line is the piano accompaniment in the right hand, and the bottom line is the piano accompaniment in the left hand. The music is in 4/4 time and features a key signature of one flat (Bb).

C F C G7 C

To Coda ⊕ D.S. al Coda (with repeats)

love sweet love, dar - lin'.

CODATA ⊕ C F C G7

Mel-low mood has got me, dar - lin'.

C F C G7 C F

Let the mu - sic rock me, dar - lin'. 'Cause I got your

C G7 C F C G7

love, dar - lin'. Love sweet love, dar - lin'.

Repeat and Fade